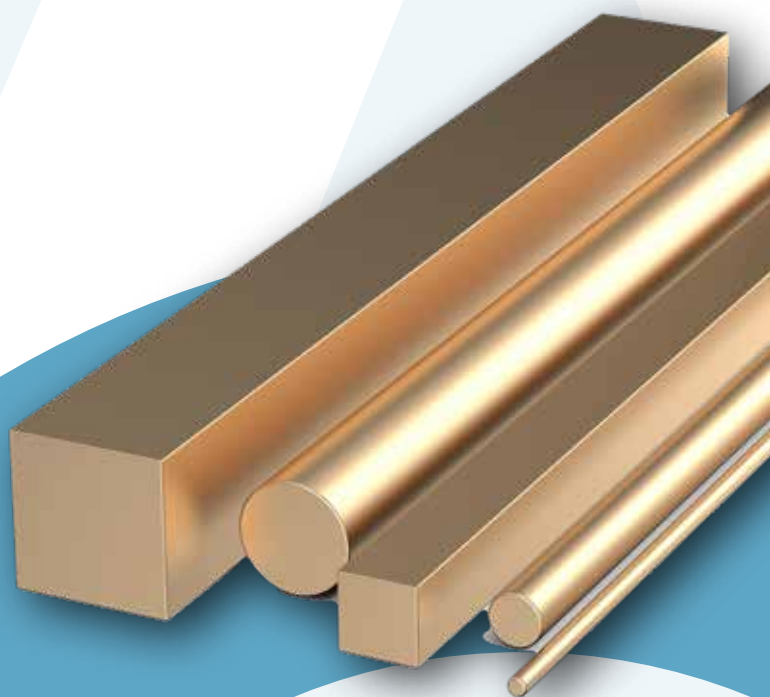


2025

Standard delivery program

# Aluminum bronze



[albromet.de](http://albromet.de)



**albromet**  
Join us in metals

Our ALBROMET aluminum bronzes are available in a wide variety of shapes and dimensions. The following overview gives you a rough idea of our standard product range. We generally have these semi-finished products in stock. This guarantees you short delivery times. In our cutting center in Geretsried, we saw the various production lengths to your desired dimensions.

Can't find what you're looking for? Ask us anyway!  
We will also be happy to help you source alternative materials.  
We look forward to hearing from you!



### Pipes

#### ALBROMET-A200 - Pipes, continuous casting

Dimension mm	Weight kg/m	Dimension mm	Weight kg/m	Dimension mm	Weight kg/m	Dimension mm	Weight kg/m
ø 33.1/17.8	4.7	ø 71.2/55.9	11.4	ø 103.6/35.8	55.7	ø 142.4/73.7	87.5
ø 33.1/20.9	3.9	ø 77.6/24.1	32	ø 103.6/42.2	52.7	ø 142.4/86.4	75.5
ø 36.3/24.1	4.3	ø 77.6/30.5	30	ø 103.6/48.5	50	ø 142.4/99.1	61.6
ø 39.5/17.8	7.3	ø 77.6/36.8	27.5	ø 103.6/54.9	45.5	ø 142.4/111.8	45.8
ø 39.5/24.1	5.8	ø 77.6/43.2	24.5	ø 103.6/61.2	41.2	ø 142.4/124.5	28.1
ø 45.8/17.8	10.5	ø 77.6/49.5	21	ø 103.6/67.6	36.3	ø 150.2/123.6	42.9
ø 45.8/24.1	8.9	ø 77.6/55.9	17.1	ø 103.6/73.9	31.1	ø 156.5/47.4	131
ø 45.8/30.5	6.9	ø 77.6/62.2	12.7	ø 103.6/80.3	25.2	ø 156.5/60.1	123
ø 49.0/36.8	6.2	ø 84.6/42.2	31.7	ø 103.6/86.6	19.1	ø 156.5/72.8	113
ø 52.2/17.8	14.2	ø 84.6/48.5	28.3	ø 110.6/67.3	45.4	ø 156.5/85.5	101.2
ø 52.2/24.1	12.6	ø 84.6/54.9	24.4	ø 110.6/73.7	40.1	ø 156.5/98.2	87.5
ø 52.2/30.5	10.6	ø 84.6/61.2	20.1	ø 110.6/86.4	28.1	ø 156.5/110.9	71.8
ø 52.2/36.8	8.1	ø 84.6/67.6	15.2	ø 117.0/48.3	66.9	ø 156.5/123.6	54.3
ø 55.3/43.2	7	ø 90.9/23.1	45.5	ø 117.0/61.0	58.7	ø 169.2/110.9	96.2
ø 58.5/24.1	16.7	ø 90.9/35.8	41.1	ø 117.0/67.3	54	ø 169.2/123.6	78.7
ø 58.5/30.5	14.7	ø 90.9/42.2	38.2	ø 117.0/73.7	48.6	ø 169.2/136.3	59.2
ø 58.5/36.8	12.2	ø 90.9/48.5	34.8	ø 117.0/80.0	42.9	ø 181.9/72.8	163.7
ø 58.5/43.2	9.2	ø 90.9/54.9	30.9	ø 117.0/86.4	36.7	ø 181.9/98.2	138.1
ø 61.7/49.5	8	ø 90.9/61.2	26.6	ø 117.0/99.1	22.8	ø 181.9/123.6	104.9
ø 64.9/24.1	21.4	ø 90.9/67.6	22.6	ø 123.3/99.1	31.7	ø 181.9/149.0	64.1
ø 64.9/30.5	19.3	ø 90.9/73.9	16.5	ø 129.7/48.3	85.3	ø 194.6/161.7	69
ø 64.9/36.8	16.8	ø 97.3/42.2	45.3	ø 129.7/61.0	77.2	ø 207.3/98.2	201.6
ø 64.9/43.2	13.8	ø 97.3/48.5	41.9	ø 129.7/73.7	67.1	ø 207.3/123.6	168.7
ø 64.9/49.5	10.4	ø 97.3/54.9	38	ø 129.7/80.0	61.4	ø 207.3/149.0	128.1
ø 68.0/55.9	8.8	ø 97.3/61.2	33.7	ø 129.7/86.4	55.1	ø 207.3/174.4	77.1
ø 71.2/30.5	24.4	ø 97.3/67.6	29.2	ø 129.7/99.1	41.2	ø 232.7/149.0	189.3
ø 71.2/36.8	21.9	ø 97.3/73.9	23.6	ø 129.7/105.4	33.6	ø 232.7/174.4	142.6
ø 71.2/43.2	18.9	ø 97.3/80.3	17.8	ø 129.7/111.8	25.5	ø 310.0/250.0	200.6
ø 71.2/49.5	15.4	ø 103.6/23.1	60.1	ø 136.0/111.8	35.3		

# Aluminum bronze



## Round bar

### ALBROMET-A200

#### Round bar, continuous casting

Dimension Ø mm	Weight kg/m
14.1	1.2
17.0	1.7
20.4	2.6
23.6	3.4
26.8	4.3
33.1	6.7
39.5	9.4
42.6	11.0
45.8	12.7
52.2	16.4
58.5	20.6
64.9	25.2
71.2	30.4
77.6	36.0
84.6	42.8
90.9	49.5
97.3	57.1
103.6	64.4
110.6	72.2
117.0	80.7
123.3	88.4
129.7	100.3
142.4	120.3
156.5	146.2
169.2	171.0
181.9	193.9
207.3	252.9
232.7	318.5
Other diameters on request	

### ALBROMET-A260Ni

#### Round bar, pressed

Dimension Ø mm	Weight kg/m
20.0	2.4
25.0	3.7
30.0	5.4
35.0	7.3
40.0	9.6
45.0	12.1
50.0	14.9
60.0	21.5
65.0	25.2
70.0	29.2
75.0	33.6
81.0	39.2
86.0	44.1
91.0	49.4
102.0	62.1
115.0	79.0
122.0	88.9
Other diameters on request	

### ALBROMET-A300

#### Round bar, pressed

Dimension Ø mm	Weight kg/m
16.0	1.4
22.0	2.7
27.0	4.1
31.0	5.5
36.0	7.3
41.0	9.5
46.0	12.0
51.0	14.7
53.0	15.9
56.0	17.7
61.0	21.0
63.0	22.4
66.0	24.6
71.0	28.5
76.0	32.7
81.0	37.1
91.0	46.8
102.0	58.8
Other diameters on request	

### ALBROMET-A200

#### Round bar, pressed / drawn

Diameters on request
----------------------

### ALBROMET-A220Ni

#### Round bars / Pipes

Diameters on request
----------------------

## Aluminum bronze



### Bar

#### ALBROMET-A340 Round bar, pressed

Diameters on request

#### ALBROMET-A340 Round bar, continuous casting

Diameters on request

#### ALBROMET-A380 Round bar, continuous casting

Dimension Ø mm	Weight kg/m
112.0	69.0
122.0	81.8
132.0	95.8
142.0	110.8
152.0	127.0
162.0	144.5
172.0	163.0
182.0	182.0
202.0	225.0
222.0	271.0
242.0	322.0
262.0	377.5
282.0	437.0
302.0	501.5
Other diameters on request	

#### ALBROMET-A380 Round bar, pressed

Dimension Ø mm	Weight kg/m
27.0	4.0
32.0	5.6
42.0	9.7
47.0	12.1
52.0	14.9
57.0	17.9
62.0	21.1
67.0	24.7
72.0	28.5
77.0	32.6
82.0	37.0
92.0	46.5
102.0	57.2
Other diameters on request	
Larger diameter forged possible	

## Aluminum bronze



### Flat material / cut-to-size sheets

#### ALBROMET-A200 - Flat material, continuous casting

Dimension mm	Weight kg/m	Dimension mm	Weight kg/m	Dimension mm	Weight kg/m	Dimension mm	Weight kg/m	Dimension mm	Weight kg/m
8.1 x 26.5	1.9	14.4 x 39.2	4.6	20.8 x 64.6	10.5	33.5 x 45.6	11.9	46.2 x 128.1	44.4
8.1 x 39.2	2.6	14.4 x 51.9	6.0	20.8 x 77.3	12.7	33.5 x 51.9	13.5	52.5 x 52.5	20.4
8.1 x 51.9	3.5	14.4 x 64.6	7.4	20.8 x 90.0	14.8	33.5 x 64.6	16.9	52.5 x 64.6	26.2
8.1 x 64.6	4.2	14.4 x 77.3	8.9	20.8 x 102.7	16.6	33.5 x 77.3	20.0	52.5 x 77.3	31.3
8.1 x 77.3	5.1	14.4 x 90.0	10.3	20.8 x 128.1	20.5	33.5 x 90.0	23.4	52.5 x 90.0	36.4
8.1 x 102.7	6.8	14.4 x 102.7	11.5	21.3 x 154.0	25.3	33.5 x 102.7	26.5	52.5 x 102.7	41.3
8.1 x 128.1	8.2	14.4 x 128.1	14.5	21.3 x 204.8	33.4	33.5 x 128.1	33.1	52.5 x 154.0	61.7
8.1 x 154.0	10.4	14.9 x 154.0	18.0	21.3 x 308.0	50.6	35.9 x 257.2	66.0	54.9 x 308.0	130.4
8.1 x 308.0	18.5	14.9 x 204.8	23.4	27.1 x 27.1	5.5	39.8 x 39.8	11.9	54.9 x 384.2	164.7
11.2 x 26.5	2.5	14.9 x 257.2	30.1	27.1 x 32.9	7.2	39.8 x 45.6	14.3	64.6 x 65.2	31.6
11.2 x 39.2	3.6	16.8 x 308.0	38.8	27.1 x 39.2	8.4	39.8 x 51.9	16.1	65.2 x 77.3	38.9
11.2 x 51.9	4.7	17.6 x 26.5	3.8	27.1 x 45.6	9.7	39.8 x 64.6	19.7	65.2 x 102.7	51.3
11.2 x 64.6	5.8	17.6 x 39.2	5.6	27.1 x 51.9	11.0	39.8 x 77.3	23.9	65.2 x 128.1	63.9
11.2 x 77.3	7.1	17.6 x 51.9	7.3	27.1 x 64.6	13.6	39.8 x 90.0	26.9	65.7 x 154.0	76.8
11.2 x 90.0	7.9	17.6 x 64.6	8.9	27.1 x 77.3	16.2	39.8 x 102.7	31.6	67.6 x 308.0	158.2
11.2 x 102.7	9.2	17.6 x 77.3	10.7	27.1 x 90.0	19.0	39.8 x 128.1	38.9	67.6 x 384.2	201.9
11.2 x 128.1	11.5	17.6 x 102.7	14.3	27.1 x 102.7	20.8	40.3 x 154.0	47.4	77.9 x 77.9	45.5
11.7 x 154.0	14.3	17.6 x 128.1	17.6	27.1 x 128.1	26.9	42.2 x 308.0	103.0	77.9 x 102.7	61.1
11.7 x 175.0	16.1	18.1 x 154.0	21.6	27.6 x 154.0	32.9	42.2 x 384.2	127.5	78.4 x 154.0	91.9
11.7 x 204.8	18.8	18.1 x 204.8	28.6	27.6 x 204.8	42.5	45.6 x 257.2	88.0	80.3 x 384.2	239.1
11.7 x 308.0	28.6	20.8 x 20.8	3.2	29.5 x 308.0	64.0	46.2 x 51.9	18.7	85.0 x 93.0	59.5
14.4 x 14.4	1.6	20.6 x 26.5	4.5	29.5 x 384.2	90.9	46.2 x 64.6	23.2	93.0 x 384.2	277.2
14.4 x 26.5	3.1	20.8 x 39.2	6.6	33.5 x 33.5	8.4	46.2 x 77.3	27.8	105.7 x 105.7	83.8
14.4 x 32.9	4.0	20.8 x 51.9	8.6	33.5 x 39.2	10.3	46.2 x 102.7	35.6	105.7 x 384.2	312.4
								154.6 x 154.6	179.3

\* Available in production lengths of approx. 3,650 mm and cut to size! Continuous casting dimensions include an allowance of approx. 1.6 - 2.0 mm for machining!

#### ALBROMET-A220Ni Flat material, forged

Dimensions on request
-----------------------

#### ALBROMET-A300 Flat material, pressed

Dimension mm	Weight kg/m
10 x 42	3.1
12 x 42	3.7
16 x 42	4.9
18 x 42	5.5

#### ALBROMET-A300 Flat material, cast

Dimension mm	Weight kg/m
30 x 400	86.4
42 x 400	121.0
54 x 400	155.5
67 x 400	193.0
80 x 400	230.4
93 x 400	267.8

#### ALBROMET-A340 /-A380 Flat material, cast

Dimensions on request
-----------------------

#### Flat material, forged:

All alloys: A200, A220Ni, A260Ni, A300, A340 and A380  
In thicknesses up to 200 mm

In production lengths of approx. 2,000 mm.  
Special cuts available!